



BERING
F L O O R S



Not all LVT/LVP is created *equal*,
Bering **Proves** it.

Inside the Bering Verified System 

The Bering Verified System ensures consistent, real world performance, *before* it reaches the jobsite.

At Bering, we don't rely on assumptions, we verify performance at every stage. In addition to our Bering employed overseas quality control team, we pay to have every production run to be independently third-party inspected, ensuring consistency in structure, durability, and appearance. Combined with our fiberglass-reinforced construction, 100% virgin vinyl formulation, elimination of heavy metals, and premium adhesive system, we deliver a level of performance that allows us to stand behind installation, in real world jobsite conditions.



What Sets Bering Apart

- ✓ Third-party pre-shipment inspections on every production run
- ✓ Fiberglass reinforcement for superior dimensional stability
- ✓ 100% virgin vinyl (no recycled contaminants)
- ✓ No heavy metals / controlled chemistry
- ✓ PFAS Free
- ✓ Minimal filler content
- ✓ Warranted installation without HVAC

Every Lot. Every Time. Verified Performance you can *trust*.

We eliminate risk for you and your projects. The Bering Verified System is a multi-stage quality assurance process that validates every production run through independent inspection, performance testing, and material control, ensuring consistent, real-world performance before product ever reaches the jobsite.



Dimensional & structural testing

Thickness verification, width & length consistency, rigidity testing, and edge profile validation.



Dimensional Stability Heat exposure testing

(176 degrees / 6 hours) measuring shrinkage ($\leq 0.16\%$) and curl/edge lift ($\leq 1\text{mm}$)



Performance Testing

Abrasion resistance, peel strength ($\geq 7\text{lb}$), and wear layer validation.



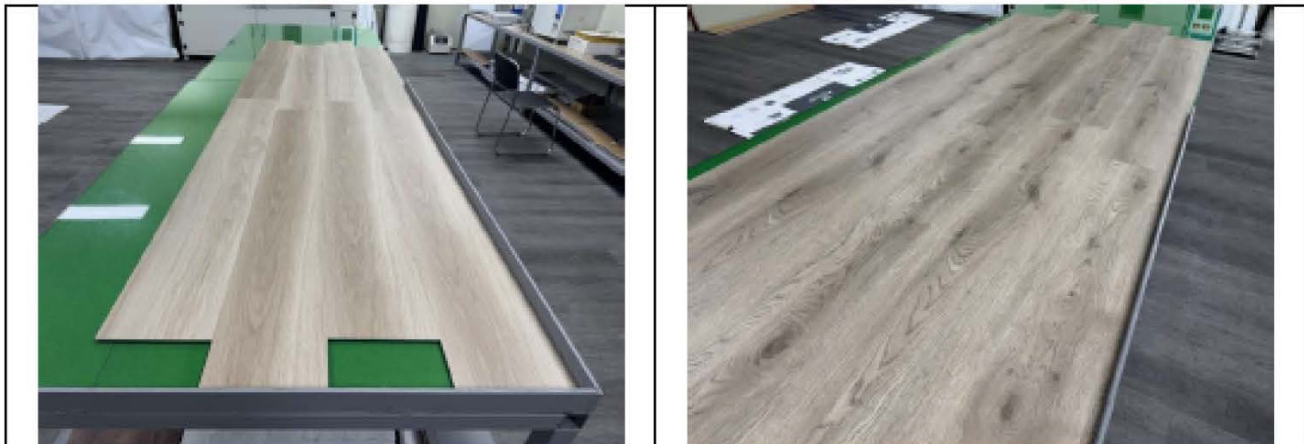
Visual & Finish Control

Sheen consistency (3–5 GU), color matching, and texture verification.

Why construction, material composition, and quality control matters:

- ✓ Prevents gapping
- ✓ Prevents edge lift
- ✓ Prevents slippage and curling
- ✓ Prevents adhesive failure
- ✓ Prevents delamination
- ✓ Prevents ledging
- ✓ Prevents installation track-off

INSPECTION INFORMATION			
Client	BERING, LLC		
Supplier Code	FL08		
Inspection Instruction	Per IR		
P.O. No.	PO41137	Name of project	-
Product Description		Lot Size	10,080
Inspection Date	FEB.12.2025	Sample Size	50
Inspection starts	08:00	Total days spend	1
Inspection finishes	17:00	Sequence of day	1
Sampling Plan	Per IP	AQL	Cr:0; Ma:2.5; Mi:4.0;



INSPECTION RESULT SUMMARY			
Category	Conform	Not Conform	Pending
1.Quantity	X		
2.Workmanship	X		
3.Style, Color & Documentation	X		
4.Field Test & Measurement	X		
5.Shipping Mark & Packaging	X		
OVERALL CONCLUSION	Conform		

Approved by:	 Issued on: 2025/2/13
--------------	--

This report reflects the facts as recorded by HQTS at the time and place of service. It does not relieve the manufacturers from their contractual obligations nor prejudice client's right for compensation for any apparent and/or hidden non-conformities not detected during our service or occurring thereafter.

2	Workmanship	NIL
3	Style, Color & Documentation	NIL
4	Field Test & Measurement	NIL
5	Shipping Mark & Packaging	NIL

INSPECTION DETAILS

1. Quantity					Conform			
P.O. No.	Item No.	P.O. Qty	Shipment Qty		Packed Qty		Sample Size	
		(Piece)	(Piece)	(Carton)	(Piece)	(Carton)	(Piece)	(Carton)
PO41137	11002-0103	2880	2880	360	2880	360	14	2
PO41137	11002-0105	3840	3840	480	3840	480	19	3
PO41137	11002-0301	3360	3360	420	3360	420	17	3
Total		10080	10080	1260	10080	1260	50	8

2. Workmanship				Conform		
AQL	Quantity	Defect Rate	AC	RE	Result	
Critical – Not allowed	-	-	0	1	Conform	
Major – AQL: -	-	-	-	-	Conform	
Minor – AQL: -	-	-	-	-	Conform	

Critical defector			
Item	Defects Description	Quantity	Defect Rate
11002-0103	-	0	0%
11002-0105	-	0	0%
11002-0301	-	0	0%

Major defector			
Item	Defects Description	Quantity	Defect Rate
11002-0103	-	0	0%
11002-0105	-	0	0%
11002-0301	-	0	0%

Minor defector			
Item	Defects Description	Quantity	Defect Rate
11002-0103	-	0	0%

Defect Photos	
Defective photos	Corrective photos
N/A	N/A

3. Style, Color & Documentation	Conform		
DESCRIPTION	Conform	Not Conform	Pending
The inspected samples were consistent with	-	-	-
Purchase Order	X		
Proforma Invoice	X		
Product Specification	X		
Approved sample	X		
Client Comment	-	-	-

4. Field Test & Measurement				Conform		
Item	Specification	Sample Size	Conform	Not Conform	Pending	
4.1. Squareness	All edges must be straight and all edges that meet (corner) must be 90 degrees to one another.	GIL-1	X			
4.2. Gap	Gap \leq 0.25mm	GIL-1	X			
4.3. Flat/smooth Edges	All edges must be smooth. Rough edges will not be accepted.	GIL-1	X			
4.4. Thickness Consistency	\leq 0.15mm for all thickness measurement points (e.g., 3 checks per length and 1 check per width or 8 total checks). When taking thickness measurements, always measure the highest (with embossed texture) points of the plank.	10 pcs for each SKU	X			
4.5. Micro Beveled Edge (Loose Lay)	Micro beveled edge. (WITH APPROVED SAMPLE)	GIL-1	X			
4.6. Flooring Dimensions	"Standard 9"x60"x4.5mm, wearlayer 0.5mm; Thickness: \pm 0.1mm Width: \pm 0.15% Length: \pm 0.15%	S-1	X			
4.7. Wearlayer thickness	20mil/0.5mm thickness, checking by 10x magnification	2 pcs per SKU	X			

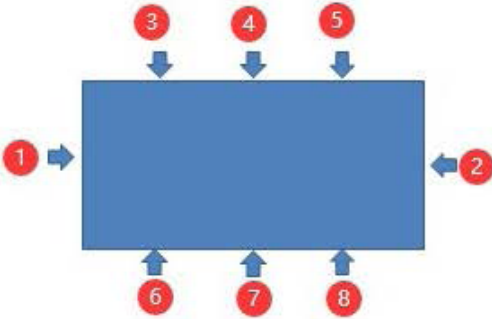
4.8.	Abrasion Resistance	0.5mm wearlayer: 3000 cycles 0.3mm wearlayer: 2000 cycles Need to provide test report in English version.	2 pcs per lot/SKU	X		
4.9.	Shrinkage Rate	1. Dimension variance should be $\leq 0.16\%$ for both length and width 2. $\leq 1.0\text{mm}$ measured from floor to highest point of underside of flooring along length and width direction. 3. Need to provide test report in English version.	2 pcs per lot/SKU	X		
4.10.	Sheen level	"1. Sheen range: a). 4-6 Gu for dry back 2mm and 2.5mm thickness with semi wild 2 embossed texture; b). 3-5 Gu for 4.5mm and 5mm thickness acoustical and loose lay plank with semi wild 2 embossed texture; c). 4-8 Gu for 5mm thickness loose lay tile (12x24") with New Slate Embossed texture. Check from three points (end, middle, end) on surface 2. Need to check sheen from different lots if there are more than 1 lot for same color per inspection 3. When there is manufacturing condition changed, i.e. replenishing UV or production stop for any reason which may cause sheen variance, factory need to keep the last box of production before condition change and the first box from production of new manufacturing condition for HQTs to check sheen. There should be no sheen variance detectable by the eye from different angles 4. Need to show all sheen reading data in IR."	GIL-1	X		
4.11.	Peeling Strength	Peeling strength is minimum 3KG	2pcs per lot	X		
4.12.	Regidiness	Visual and touching by hand to see if the plank regidity is different between signed sample and products.	10 pcs for each SKU	X		

4.13.	Color	Approved Bering standard	GIL-1	X		
4.14.	Texture	Approved Bering standard	GIL-1	X		
4.15.	Carton, label, marking	"Approved Bering carton label format and carton artwork with pantone code(s);	3 pcs per lot/SKU	X		
4.16.	Fumigation	1. Provide fumigation certificate 2. IPPC stamp, solid wood pallets should be stamped clearly with IPPC on two opposite sides;	1 PC	X		
4.17.	Scan code checking	To scan the code on carton to see if it shows Bering company info.	1 PC	X		
4.18.	Pallet	1. The net clearance height of pallet for pallet jack operation is no less than 90mm. 2. The net clearance width for pallet jack operation is no less than 690mm(width between outer of feet)."	S-3	X		

11002-0103 Doe Mountain

Checking Item	Specification	Result
Flooring length	1524.0 mm +/-0.15%	Satisfactory
Flooring width	228.6 mm +/-0.15%	Satisfactory
Flooring thickness	4.5mm+/-0.1mm	Satisfactory
Thickness Consistency	Deviation $\leq 0.15\text{mm}$	Satisfactory
Micro-beveled edge	-	Applied
Gap between pieces when assembly	$\leq 0.25\text{mm}$	Satisfactory
Wearlayer thickness	12mil/0/3mm thickness	Satisfactory
Abrasion Resistance	$\leq 0.015\text{g}$	Satisfactory
Shrinkage Rate	1. Dimension variance should be $\leq 0.16\%$ for both length and width; 2. $\leq 1.0\text{mm}$ measured from floor to highest point of underside of flooring for length and width"	Satisfactory

Thickness Consistency



	1)	2)	3)	4)	5)	6)	7)	8)	Max.	Min.	Dev.
#1.	4.48	4.50	4.54	4.54	4.49	4.55	4.51	4.49	4.55	4.48	0.07
#2.	4.52	4.55	4.55	4.51	4.51	4.53	4.50	4.50	4.55	4.50	0.05
#3.	4.54	4.53	4.52	4.52	4.50	4.50	4.49	4.50	4.54	4.49	0.05
#4.	4.54	4.52	4.55	4.52	4.51	4.54	4.49	4.52	4.55	4.49	0.06
#5.	4.53	4.54	4.56	4.54	4.52	4.52	4.50	4.51	4.56	4.50	0.06
#6.	4.55	4.50	4.52	4.51	4.56	4.55	4.49	4.54	4.56	4.49	0.07
#7.	4.50	4.49	4.52	4.50	4.49	4.52	4.50	4.51	4.52	4.49	0.03
#8.	4.49	4.52	4.54	4.53	4.51	4.51	4.52	4.54	4.54	4.49	0.05
#9.	4.52	4.54	4.49	4.52	4.55	4.52	4.48	4.50	4.55	4.48	0.07
#10.	4.51	4.52	4.48	4.56	4.54	4.53	4.50	4.51	4.56	4.48	0.08

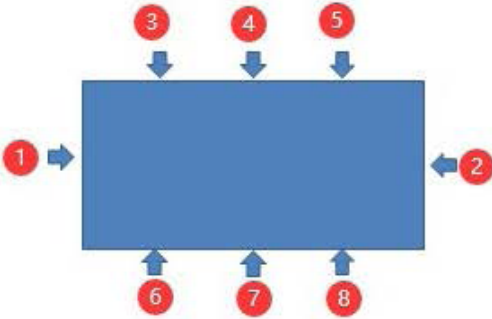
Sheen level data sheet (3 points per piece) for dry back 4.5 and 5mm, acoustical and loose lay plank. (3~5 Gu)

	1)	2)	3)	4)	5)	6)	7)	8)	9)	10)
Point 1	3.9	3.9	3.6	3.7	3.5	3.6	3.7	3.6	3.9	3.7
Point 2	3.6	3.5	3.5	3.8	3.8	3.9	3.6	3.8	3.6	3.8
Point 3	3.4	3.6	3.5	3.8	3.9	3.4	3.7	3.7	3.7	3.6

11002-0105 Arroyo Dune

Checking Item	Specification	Result
Flooring length	1524.0 mm +/-0.15%	Satisfactory
Flooring width	228.6 mm +/-0.15%	Satisfactory
Flooring thickness	4.5mm +/-0.1mm	Satisfactory
Thickness Consistency	Deviation $\leq 0.15\text{mm}$	Satisfactory
Micro-beveled edge	-	Applied
Gap between pieces when assembly	$\leq 0.25\text{mm}$	Satisfactory
Wearlayer thickness	12mil/0.3mm thickness	Satisfactory
Abrasion Resistance	$\leq 0.015\text{g}$	Satisfactory
Shrinkage Rate	1. Dimension variance should be $\leq 0.16\%$ for both length and width; 2. $\leq 1.0\text{mm}$ measured from floor to highest point of underside of flooring for length and width"	Satisfactory

Thickness Consistency



	9)	10)	11)	12)	13)	14)	15)	16)	Max.	Min.	Dev.
#11.	4.54	4.53	4.51	4.54	4.54	4.53	4.54	4.49	4.54	4.49	0.05
#12.	4.51	4.51	4.51	4.52	4.50	4.51	4.53	4.52	4.53	4.50	0.03
#13.	4.54	4.51	4.50	4.50	4.50	4.54	4.50	4.53	4.54	4.50	0.04
#14.	4.54	4.52	4.55	4.52	4.51	4.54	4.49	4.52	4.55	4.49	0.06
#15.	4.53	4.54	4.56	4.54	4.52	4.52	4.50	4.51	4.56	4.50	0.06
#16.	4.55	4.50	4.52	4.51	4.56	4.55	4.49	4.54	4.56	4.49	0.07
#17.	4.50	4.49	4.52	4.50	4.49	4.52	4.50	4.51	4.52	4.49	0.03
#18.	4.49	4.52	4.54	4.53	4.51	4.51	4.52	4.54	4.54	4.49	0.05
#19.	4.52	4.54	4.49	4.52	4.55	4.52	4.48	4.50	4.55	4.48	0.07
#20.	4.51	4.52	4.48	4.53	4.54	4.53	4.50	4.50	4.54	4.48	0.06

Sheen level data sheet (3 points per piece) for dry back 4.5 and 5mm, acoustical and loose lay plank. (3~5 Gu)

	11)	12)	13)	14)	15)	16)	17)	18)	19)	20)
Point 1	3.4	3.2	3.1	3.7	3.5	3.6	3.7	3.6	3.4	3.2
Point 2	3.5	3.2	3.0	3.5	3.8	3.9	3.6	3.8	3.5	3.6
Point 3	3.2	3.2	3.3	3.0	3.6	3.8	1.0	3.7	3.6	3.5

11002-0301 Stormy Port

Checking Item	Specification	Result
Flooring length	1524.0 mm +/-0.15%	Satisfactory
Flooring width	228.6 mm +/-0.15%	Satisfactory
Flooring thickness	4.5mm +/-0.1mm	Satisfactory
Thickness Consistency	Deviation $\leq 0.15\text{mm}$	Satisfactory
Micro-beveled edge	-	Applied
Gap between pieces when assembly	$\leq 0.25\text{mm}$	Satisfactory
Wearlayer thickness	12mil/0.3mm thickness	Satisfactory
Abrasion Resistance	$\leq 0.015\text{g}$	Satisfactory
Shrinkage Rate	1. Dimension variance should be $\leq 0.16\%$ for both length and width; 2. $\leq 1.0\text{mm}$ measured from floor to highest point of underside of flooring for length and width"	Satisfactory

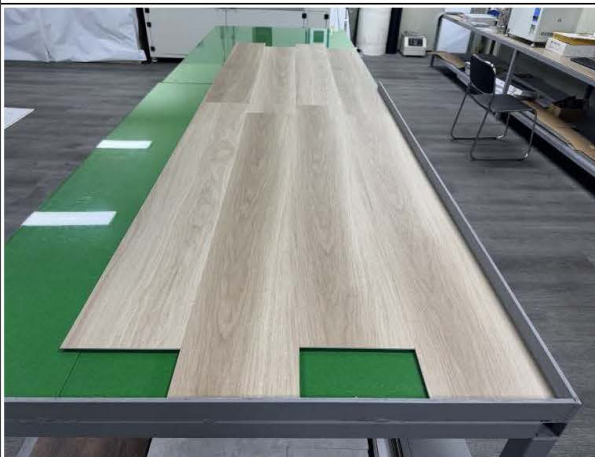
Thickness Consistency

7. Photos

11002-0103 Doe Mountain



Entire box



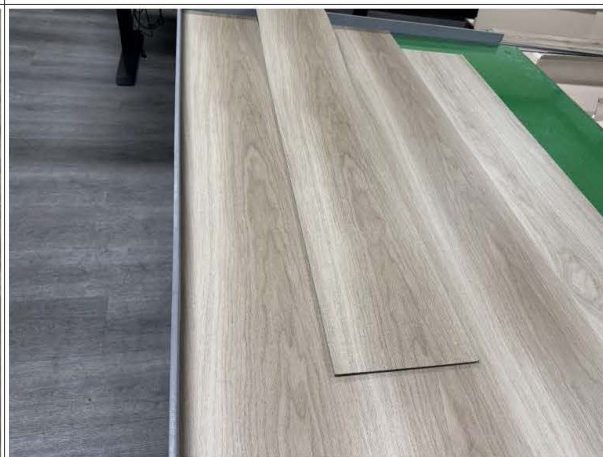
Assembly check



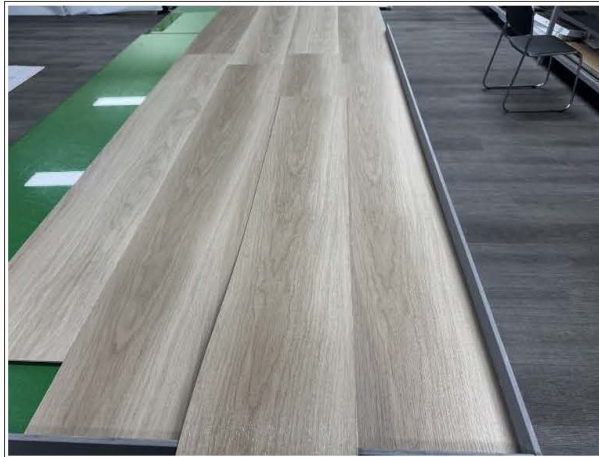
Assembly check



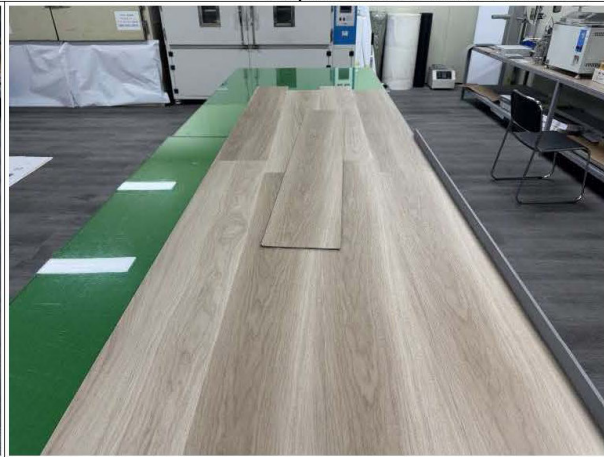
Assembly check



Pattern comparison



Assembly check



Color comparison



Master plank



Master plank



Item marking sticker on box



Barcode reading



Squareness check



Squareness check



Check length of plank



Check length of plank



Check width of plank



Check width of plank



Check thickness of plank



Check thickness of plank



Check thickness of plank



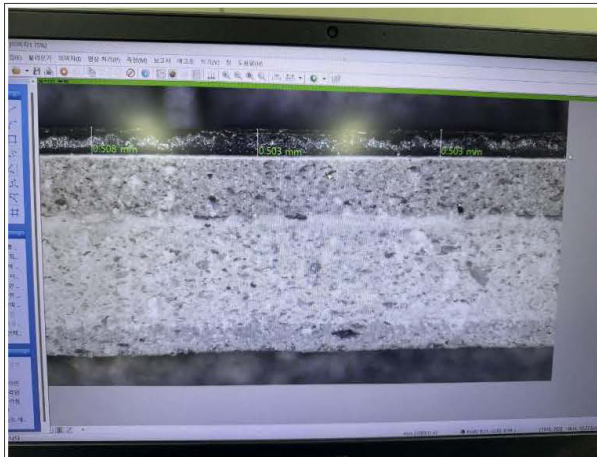
Check thickness of plank



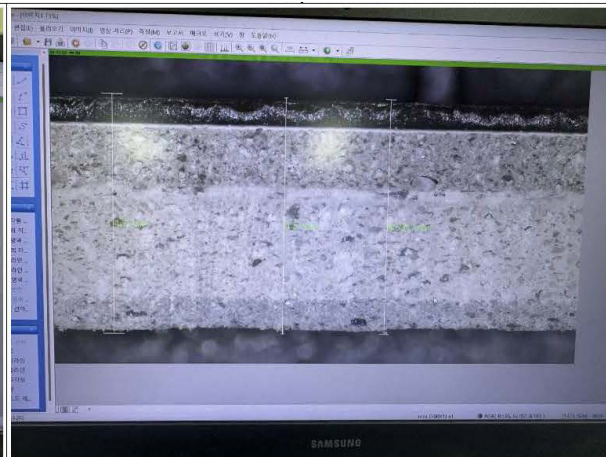
Check sheen level



Check sheen level



Visual & Dimension through microscope



Visual & Dimension through microscope



Shrinkage- Measure thickness before heating



Shrinkage- Measure width before heating



Shrinkage- Measure length before heating



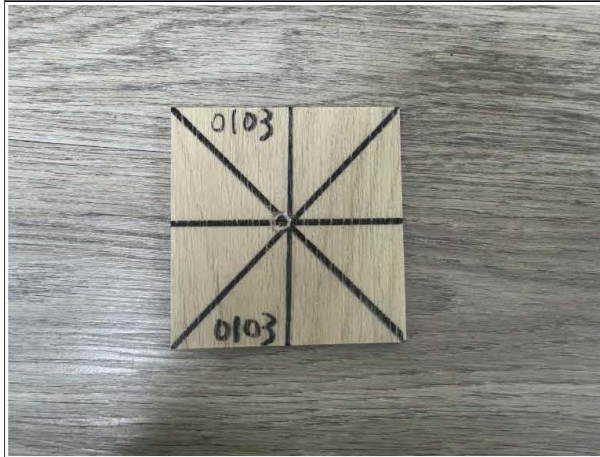
Shrinkage- Measure thickness after heating



Shrinkage- Measure width after heating



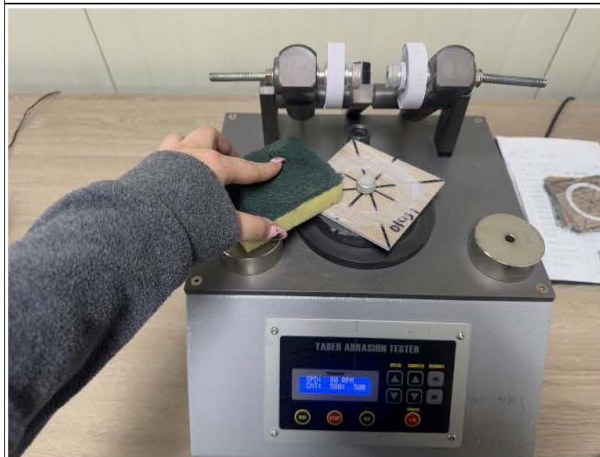
Shrinkage - Measure length after heating



Abrasion Resistance



Abrasion Resistance



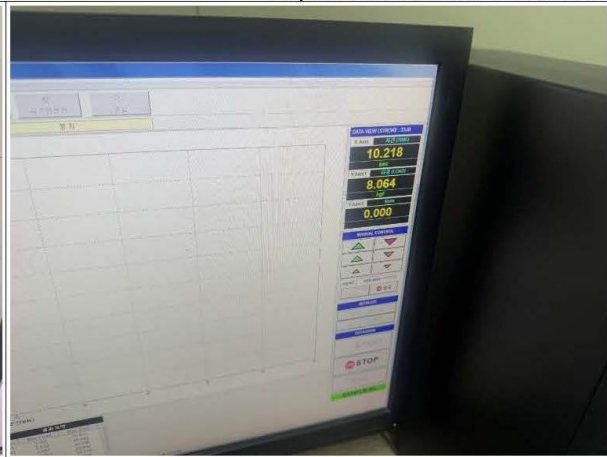
Abrasion Resistance



Abrasion Resistance



Peeling Strength check



Peeling Strength check

11002-0105 Arroyo Dune



Entire box



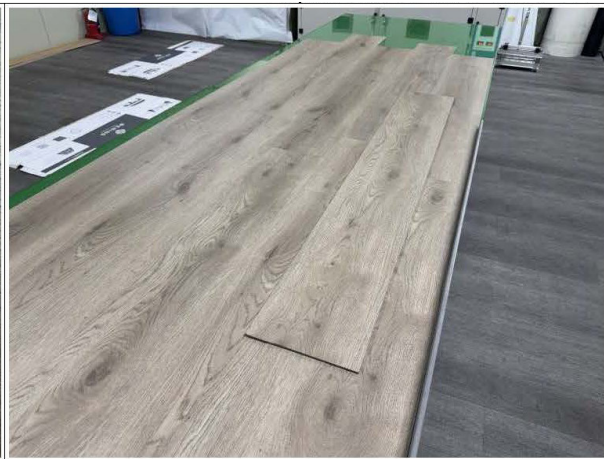
Assembly check



Assembly check



Assembly check



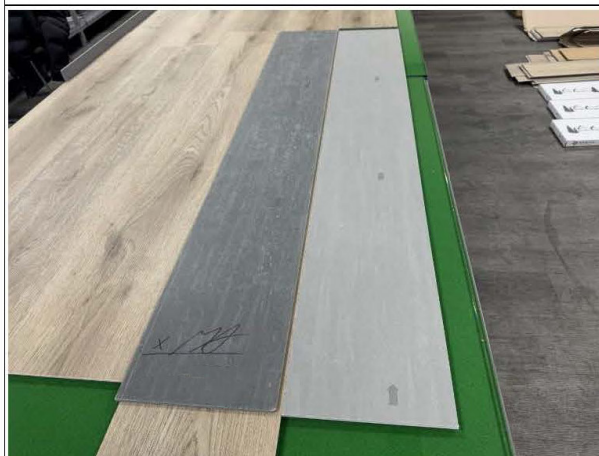
Pattern comparison



Assembly check



Color comparison



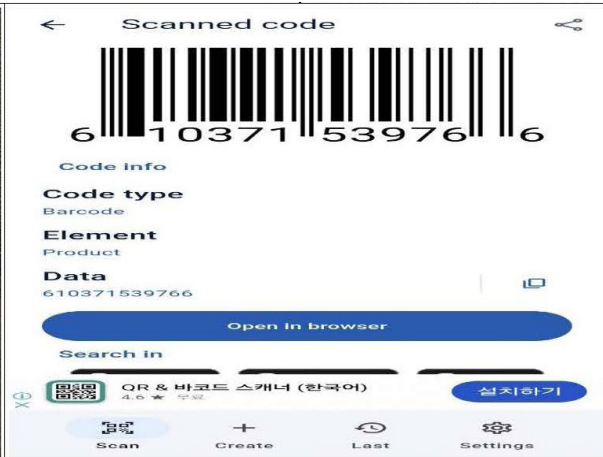
Master plank



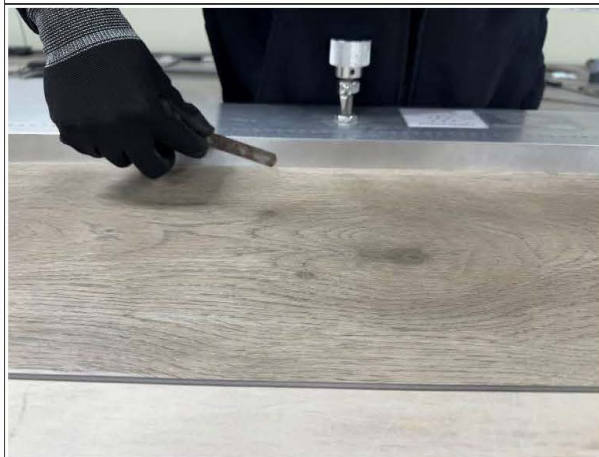
Master plank



Item marking sticker on box



Barcode reading



Squareness check



Squareness check



Check length of plank



Check length of plank



Check width of plank



Check width of plank



Check thickness of plank



Check thickness of plank



Check thickness of plank



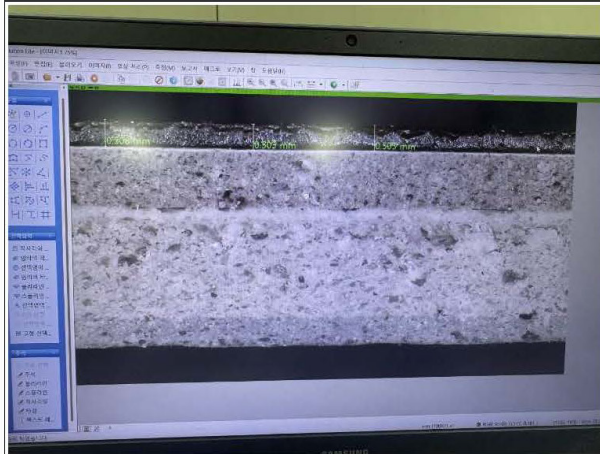
Check thickness of plank



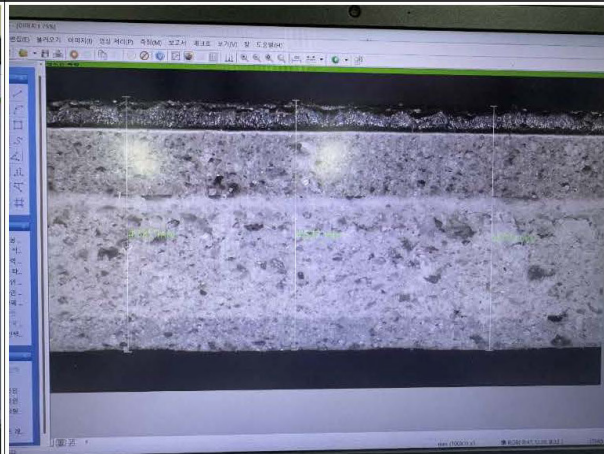
Check sheen level



Check sheen level



Visual & Dimension through microscope



Visual & Dimension through microscope



Shrinkage- Measure thickness before heating



Shrinkage- Measure width before heating



Shrinkage- Measure lengt before heating



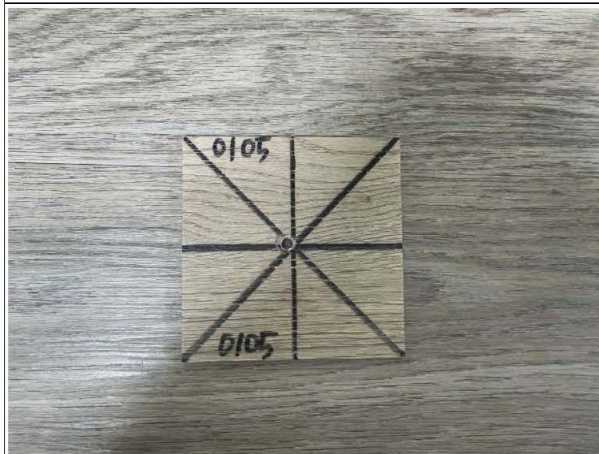
Shrinkage- Measure thickness after heating



Shrinkage- Measure width after heating



Shrinkage - Measure length after heating



Abrasion Resistance



Abrasion Resistance



Abrasion Resistance



Abrasion Resistance



Peeling Strength check

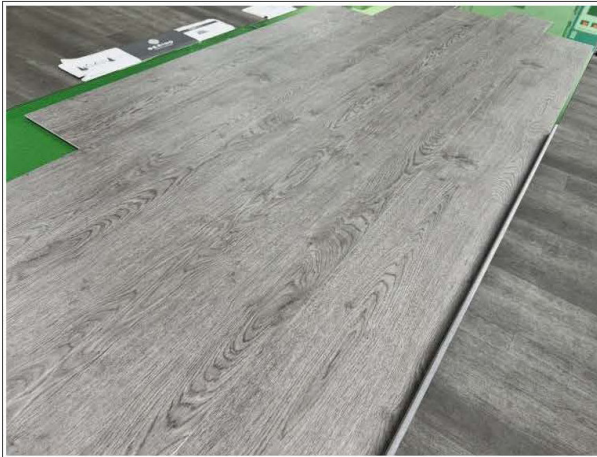


Peeling Strength check

11002-0301 Stormy Port



Entire box



Assembly check



Assembly check



Assembly check



Pattern comparison



Assembly check



Color comparison



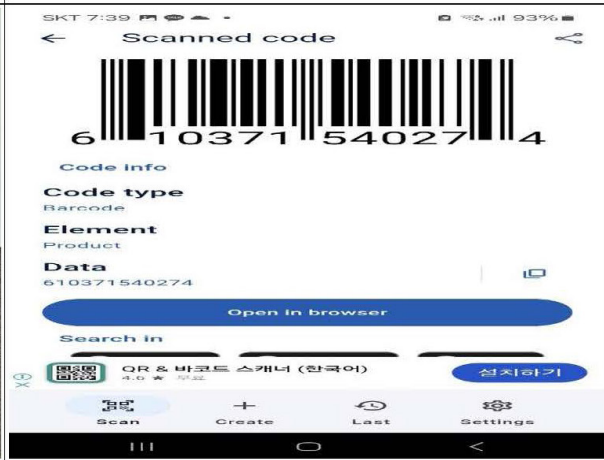
Master plank



Master plank



Item marking sticker on box



Barcode reading



Squareness check



Squareness check



Check length of plank



Check length of plank



Check width of plank



Check width of plank



Check thickness of plank



Check thickness of plank



Check thickness of plank



Check thickness of plank



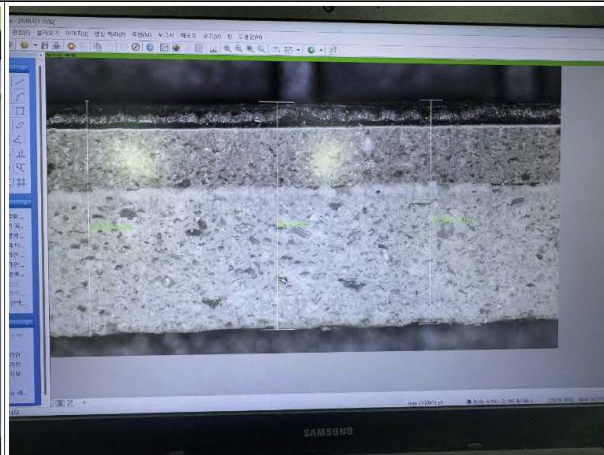
Check sheen level



Check sheen level



Visual & Dimension through microscope



Visual & Dimension through microscope



Shrinkage- Measure thickness before heating



Shrinkage- Measure width before heating



Shrinkage- Measure length before heating



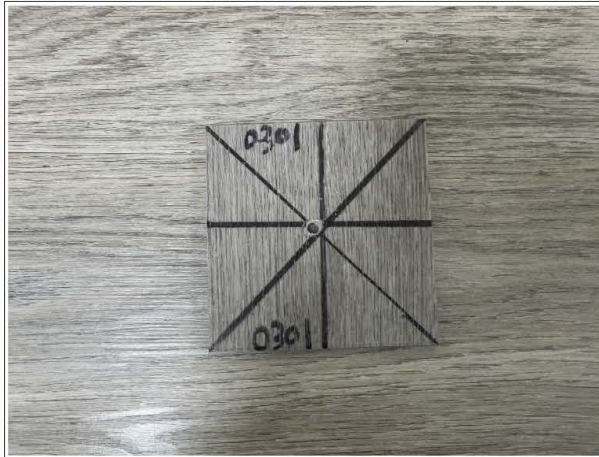
Shrinkage- Measure thickness after heating



Shrinkage- Measure width after heating



Shrinkage - Measure length after heating



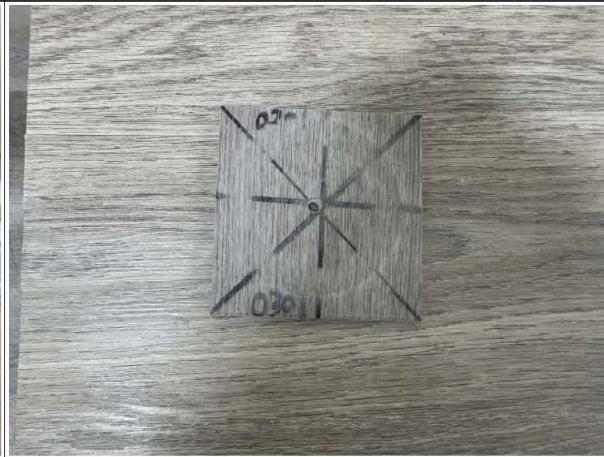
Abrasion Resistance



Abrasion Resistance



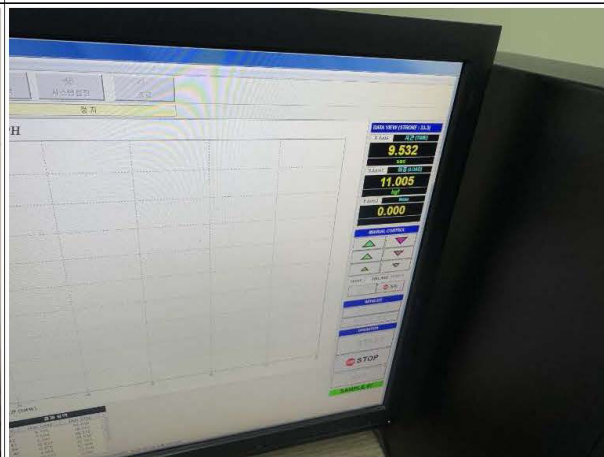
Abrasion Resistance



Abrasion Resistance



Peeling Strength check



Peeling Strength check

Inspector:	Sung-jin	Auditor:	631
End of Report			

Why Bering is *Better*.

Bering Verified System.

Every order is checked and verified, to ensure consistent quality, reducing installation risk, and ensuring reliable performance.

Industry-Leading Warranty.

Our fiberglass-reinforced glue-down LVT resists expansion and contraction, even in uncontrolled environments. A wider warranted installation range of 45–90°F (vs. the industry standard 65–90°F) eliminates acclimation and HVAC requirements—reducing risk and simplifying installation.

Acoustic Comfort.

All products meet IIC requirements for multi-family construction while maintaining the durability and cleanability that high-traffic communities demand.

Service that Keeps Projects Moving.

Submittals, brand standard documentation, mock ups, and field tech support, plus fast replacements for maintenance teams. Jobsite logistics & phased deliveries to meet turn schedules.

Distribution Nationwide.

A nationwide network of regional warehouses enables Bering to deliver faster—offering reliable replenishment and 2–3 day delivery across the U.S.

Lease-Ready Aesthetics.



Designed around today's leading color palettes, our flooring collections feature realistic wood textures with EIR (embossed-in-register) finishes and precision micro-bevel detailing.

DEFENSHIELD™ Technology Wear Layers.

Protected by a UV-cured urethane and aluminum oxide wear layer for superior scratch, stain, and scuff resistance.

Competitive Pricing.

Uncompromised product value with less overhead and more operational strength. National freight programs and volume pricing make our curated collections work harder for your budget.

-  PERFORMANCE
-  ACOUSTICS
-  SERVICE
-  AESTHETICS
-  VALUE








BERING
FLOORS

Inside the Bering Verified System 

Let's *Spec* It.


 1.855.792.1010

 contact@beringfinishes.com

 www.beringfinishes.com



@beringfinishes

 848 South 4400 West, Suite 100 | Salt Lake City, UT 84104